

AUGUST 23, 2024

8:25 am – 4:30 pm

The William F Andrews Center
Raleigh, NC

Supporting FAMILIES THROUGH INFANT LOSS

**Critical Challenges &
Practical Solutions**

**REGISTRATION & CONTINENTAL
BREAKFAST** 7:45 am

PROGRAM 8:25 am – 4:30 pm

This conference will address the important topic of infant loss after 20 weeks of gestation. We will approach this issue with a focus on racial and ethnic health disparities and will cover strategies of providing support for families and healthcare teams navigating loss as well as best practices to optimize the health of pregnant women who experience loss.

Target Audience

Physicians, Advanced Practice Providers, Nurses, Birthing Professionals, Social Workers and other healthcare professionals working in maternal health

Learning Objectives

At the conclusion of this competency-based activity, the participant should be able to:

- Discuss current data and factors that contribute to trends in maternal morbidity and mortality.
- Review the perinatal grief process and its effects on families.
- Discuss how to work with grieving parents.
- Analyze mental health risks following infant loss.
- Verbalize intersections of Perinatal Loss and Secondary Trauma experience by healthcare team members.
- Identify strategies to support individuals that have experienced perinatal loss.
- Explain best practices related to the care of the woman with hypertension
- Address common misconceptions and myths surrounding preconception care after loss.
- Discuss the importance of preconception care for individuals who have experienced pregnancy loss by identifying essential components and highlighting the significance of emotional and physical preparation for future pregnancies.
- Examine the disparities in access to preconception care following pregnancy loss.

IN COLLABORATION WITH

IN PARTNERSHIP WITH

WAKE AHEC
PART OF NC AHEC

DUKE AHEC
PART OF NC AHEC

AREA L AHEC
PART OF NC AHEC

**RECRUIT
TRAIN
RETAIN**



**NC DEPARTMENT OF
HEALTH AND
HUMAN SERVICES**
Division of Public Health

Agenda

- 7:45 am **Registration and Continental Breakfast**
- 8:25 **Welcome, Opening Remarks**
Rachel Urrutia, MD, MSCR
- 8:30 **Cultural Lens and Landscape of Infant Loss In North Carolina**
Keisha Leanne Bentley-Edwards, PhD
- 9:15 **Embracing Hope: Preconception Care Following Loss**
Latoya Patterson, MD, MPH
- 10:00 **Break**
- 10:15 **The Other Postpartum: Psychiatric Sequelae following Newborn/Infant Loss**
Julia Riddle, MD
- 11:00 **Panel (Lived Experiences)**
Moderator Dr. Rachel Urrutia
& Facilitator Leila Lewis
- 12:00 **Lunch**
- 1:00 **Hypertension Disorders**
Elizabeth Coviello, MD
- 1:45 **Fetal Alcohol Spectrum Disorders: The Impact of Alcohol-Exposed Pregnancies**
Kelly Pieh Holder, DO, FACOG, FASAM, MA, IBCLC
- 2:45 **Break**
- 2:50 **Navigating the Complexities of Perinatal Loss: Honoring Lived Experience and Addressing Secondary Trauma**
Kimberly D. Harper, MSN, RN, MHA
- 3:35 **Perinatal Grief**
Darryl I. Owens, MDiv, BCC, CT
- 4:20 **Conference Wrap-up / Next Steps**
Dr. Rachel Urrutia, MD, MSCR
- 4:30 **Adjourn**

Faculty

Rachel Urrutia, MD, MSCR

Conference Course Director
Women's Health Medical Consultant
Division of Public Health – Women Infant and Community Wellness Section
North Carolina Department of Health and Human Services

Keisha L. Bentley-Edwards, PhD

Associate Director of Research, Samuel DuBois Cook Center on Social Equity
Co-Director, Special Populations Core & the Center for Equity in Research, CTSI
Associate Professor of Medicine, Division of General Internal Medicine
Duke University

Elizabeth Coviello, DO, FACOG

Assistant Professor, Maternal Fetal Medicine
Medical Director, UNC Hospitals Labor and Delivery

Kimberly D. Harper, RN, MSN, MHA

Perinatal Neonatal Outreach Coordinator
UNC Center for Maternal & Infant Health
UNC Hospitals

Kelly Pieh Holder, DO, FACOG, FASAM, MA, IBCLC

Medical Director of Maternity Care Center
Campbell University Chair of Obstetrics and Gynecology
UNC Health Chatham Hospital

Tomeka James Isaac

Advocate for Reproductive Empowerment

Leila D. Lewis, MFA, R-PLC, CCHW

Facilitator/Consultant
Lewis & Lewis, LLC

Darryl I. Owens, MDiv, BCC, CPLC

Women Services Chaplain
Grief Counselor
Department of Pastoral Care
UNC Hospitals

Latoya Patterson, MD, MPH

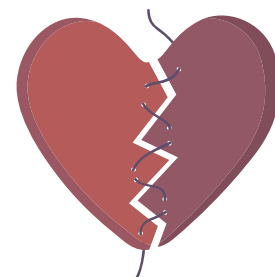
Assistant Professor | Associate Program Director
Department of Obstetrics and Gynecology
Duke Women's Health Associates
Duke University Medical Center

Julia N. Riddle, MD

Assistant Professor
Reproductive Psychiatrist/Researcher
Center for Women's Mood Disorders
UNC Hospitals

Racquel Washington, MA

Reproductive Justice Birthworker/
Holistic Yoga & Wellness
The Queen's Collective Birthing
The Queen's Circle- Intentional
Pregnancy Loss Community



Click to register

Planning Committee

NC DHHS

Rachel Urrutia, MD, MSCR
Ebony S. Tate, MSN, CNM

Gerri Mattson, MD, FAAP, MSPH
Shelby Weeks, MHS

COMMUNITY ENGAGEMENT

Leila D. Lewis, MFA, CCHW, R-PLC

WAKE AHEC

Sandie Manning, MAEd

WAKEMED HEALTH & HOSPITALS

Kristen M. Barbour, BSN, RNC-OB, C-EFM
Sherika Hi-Smith, MPH, BSN, RN

UNC HOSPITALS

Darryl I. Owens, MDiv, BCC, CPLC

Credit

CME: The Wake Area Health Education Center (Wake AHEC) designates this live activity for a maximum of 6.75 AMA PRA Category 1 Credits™. Physicians should claim only the credit commensurate with the extent of their participation in the activity.



The North Carolina Medical Society is a member of the Southern States CME Collaborative (SSCC). Wake Area Health Education Center is accredited by the SSCC to provide continuing medical education for physicians.

American College of Obstetricians and Gynecology: The American College of Obstetricians and Gynecologists has assigned up to 6.75 cognate credits to this program.

Certified Chaplains: The provider of this educational event has designed the program so that it may be considered by participants for use as continuing education to enhance the professional knowledge and pastoral competency of chaplains certified through the Board of Chaplaincy Certification Inc.® an affiliate of the Association of Professional Chaplains®.

Contact Hours: Wake AHEC will provide up to 6.75 Contact Hours to participants. A participant must attend 100% of the program to receive credit. Partial credit will not be awarded.

Registration Fee

- **Early Fee** – \$25. Reduced registration fees thanks to the generous support of Duke Area Health Education Center.
- Vouchers will be accepted.
- Registration will include online handouts and online certificate of completion.

Cancellations and Refunds: Registrants cancelling between August 8, 2024 and August 19, 2024 will incur a \$25 cancellation fee. No refunds or credits will be given for cancellations received after August 8, 2024. Substitutes encouraged. Vouchers will be accepted.

ADA Statement

Visit www.wakeahec.org for our ADA Statement.

Questions? Contact Julia Jenkins at 919-350-0455 or juljenkins@wakeahec.org.



Supporting FAMILIES THROUGH INFANT LOSS

**Critical Challenges &
Practical Solutions**



Click to register