



# INTIMATE PARTNER VIOLENCE FOR OUTPATIENT AND URGENT CARE PROVIDERS

## Intimate Partner Violence Foundations and Screening



68520lm

## Best Practices in Intimate Partner Response



68542lm

## Creating a Culture of Care for Survivors of Intimate Partner Violence



68543lm

Intimate partner violence (IPV) has only become more widely accepted as a healthcare issue within the last several years and is a prevalent health challenge. With limited time and resources, integrating IPV into primary care can be challenging for many healthcare providers. A crucial first step in IPV management in outpatient care is to increase knowledge and awareness of the health and safety impacts of IPV. Better identification, screening and management of IPV allows healthcare clinicians to provide optimal care and improve health outcomes for the survivor. Join us for three comprehensive webinars that will provide overall IPV education, screening tools, reporting requirements, and resources, with a focus on implementing these measures in a clinical setting.

### Target Audience

Physicians, Advanced Practices Providers, Nurses, Social Workers, and other healthcare professionals who are committed to responding to patients who are experiencing intimate partner violence



RECORDED WEBINARS

# INTIMATE PARTNER VIOLENCE

## FOR OUTPATIENT AND URGENT CARE PROVIDERS

### Learning Objectives

---

At the conclusion of these competency-based activities, the participant should be able to:

#### Intimate Partner Violence Foundations and Screening

- Discuss the impact of IPV on patient health, children, including health disparities.
- Discuss the use of patient IPV education and screening tools.

#### Best Practices in Intimate Partner Response

- Examine appropriate ways to respond to disclosures of IPV, confidentiality and reporting requirements.
- Apply practice recommendations by integrating abuse into care and referring to external resources.

#### Creating a Culture of Care for Survivors of Intimate Partner Violence

- Identify barriers and solutions in providing care for survivors of intimate partner violence in the health care setting.
- Reflect on providers' attitudes regarding intimate partner violence and how these impact understanding of survivors' experience.
- Recognize skills necessary for providing essential clinical care for survivors of intimate partner violence.

### Faculty

---

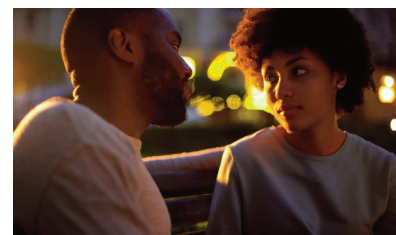
#### Christine Khandelwal, DO

Conference Course Director  
Vice President of Education and Strategic Outreach  
Transitions LifeCare  
Professor, Dept of Family Medicine, Geriatrics  
Campbell University School of Osteopathic Medicine



#### Melinda Manning, JD, MSW

Director, UNC Health Beacon Program  
UNC Health



#### Cassandra Rowe, MPH

Co-Director of Survivor Wellbeing  
NC Coalition Against Domestic Violence



#### Jessica R. Williams, PhD, MPH, PHNA-BC, FAAN

Associate Professor, School of Nursing  
University of North Carolina at Chapel Hill

REGISTER AT [WWW.WAKEAHEC.ORG](http://WWW.WAKEAHEC.ORG).

RECORDED WEBINARS

# INTIMATE PARTNER VIOLENCE

## FOR OUTPATIENT AND URGENT CARE PROVIDERS



### Credit

---

The Wake Area Health Education Center (Wake AHEC) designates this enduring material for a maximum of 1.0 *AMA PRA Category 1 Credits™* per session. Physicians should claim only the credit commensurate with the extent of their participation in the activity.



**Accreditation Statement:** This activity has been planned and implemented in accordance with the accreditation requirements and policies of the North Carolina Medical Society (NCMS) through the joint providership of Wake AHEC and the North Carolina Medical Board. Wake AHEC is accredited by the NCMS to provide continuing medical education for physicians.

**Additional Credit:** ANCC and the North Carolina Board of Nursing accepts *AMA PRA Category 1 Credits™* from the organizations accredited by the Accreditation Council for Continuing Medical Education (ACCME).

**Wake AHEC CEU:** Wake AHEC will provide .1 CEU to participant upon completion of this activity.

A participant must attend 100% of the activity to receive credit. Partial CEU will not be awarded.

**Contact Hours:** Wake AHEC will provide up to 1.0 contact hour to participants.

*Wake AHEC is part of the North Carolina AHEC Program.*

### Registration Fee

---

- \$20 per session.
- Vouchers will be accepted.

**Cancellations and Refunds:** No refunds will be issued. Substitutes are encouraged.

### ADA Statement

---

Visit [www.wakeahec.org](http://www.wakeahec.org) for our ADA Statement.

**Questions?** Contact Lue McKnight at 919-350-0469 or [lmcknight@wakeahec.org](mailto:lmcknight@wakeahec.org).

**REGISTER AT [WWW.WAKEAHEC.ORG](http://WWW.WAKEAHEC.ORG).**