

# THE COMPLEX NEEDS OF OLDER ADULTS

MENTAL HEALTH, LEGAL ISSUES,  
AND COMMUNITY SUPPORT



**THURSDAY, SEPTEMBER 7, 2023**

**REGISTRATION** 7:30 am • **PROGRAM** 8:00 am – 4:15 pm

The William F. Andrews Conference Center, 3024 New Bern Ave, Raleigh, NC 27610

This conference is designed to provide health care professionals with new perspectives as they care for older adults and their complex needs. Content will focus on mental health and substance abuse, cognitive decline, communication and de-escalation techniques, how living in a rural area affects access to care and telehealth, guardianship, legal issues, neglect and abuse, and Aging in Place. The conference wraps up with a caregiver perspective of caring for a spouse in need of memory care.

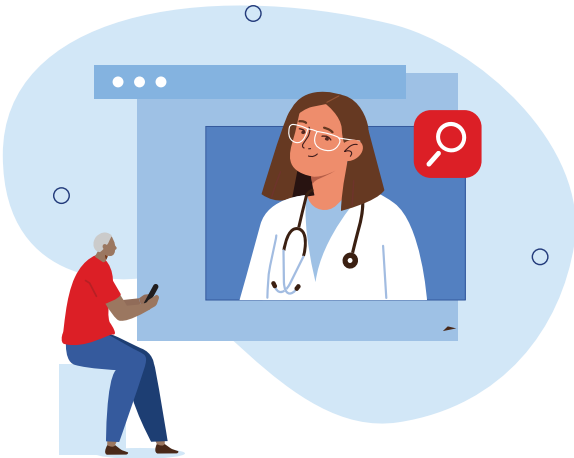


This project is supported by funds from the Bureau of Health Professions (BHP), Health Resources and Services Administration (HRSA), Department of Health and Human Services (DHHS) under grant number #2U1QHP28734 Carolina Geriatric Workforce Enhancement Program. This information or content and conclusions are those of the author and should

not be construed as the official position or policy of, nor should any endorsements be inferred by the BHP, HRSA, DHHS or the U.S. Government. The UNC Center for Aging and Health, Carolina Geriatric Education Center also provided support for this activity.

**DUKE AHEC**  
PART OF NC AHEC

**WAKE AHEC**  
PART OF NC AHEC



## Target Audience

Physicians, Physician Assistants, Nurse Practitioners, Registered Nurses, Social Workers, Case Managers, Psychologists, Chaplains, Physical Therapists, Occupational Therapists, Home Health Professionals, Nursing Home Administrators, and other healthcare professionals involved in the care of older adults

## Learning Objectives

At the conclusion of this competency-based activity, the participant should be able to:

- Identify the most prevalent mental health diagnoses in older adults including associated symptoms, risk factors, and potential co-morbidities.
- List 3 complications related to dementia and delirium.
- Discuss the factors affecting access to health care for older adults.
- Describe types of elder abuse.
- Identify 3 key ethical issues relevant to caring for older adults with complex care needs.

## Agenda

7:30 am	<b>Registration, Breakfast, &amp; Exhibitors</b>
7:50	<b>Welcome &amp; Announcements</b> Eric LeFebvre, MD, FACEP & Erica Futrell, MSL
8:00	<b>Silver Minds: A Primer on Geriatric Mental Health</b> Micah Krempasky, MD
9:00	<b>Cognitive Changes in Older Adults: Multidisciplinary Approaches to Diagnosis and Care</b> Derya Ozkok, MD & Kaytlin Atwood, MSN, APRN, AGCNS-BC, MEDSURG-BC
10:00	<b>Break &amp; Exhibitors</b>
10:15	<b>Communication and De-escalation Techniques</b> Graham Snyder, MD, FACEP & Linda Mayo MSN, APRN, ACNS, AGNP
11:15	<b>Promoting Equity in Health Services Access and Use Among Older Adults</b> Stephanie Hart PhD, APRN, NP-C & Edwin Burkett, MD, MBA
12:15 pm	<b>Lunch &amp; Exhibitors</b>
1:15	<b>Legal and Ethical Issues with Elder Abuse</b> Melinda Manning, JD, MSW
2:15	<b>Aging in Place</b> Rachel Lipner, DO, HMDC
3:15	<b>Break &amp; Exhibitors</b>
3:30	<b>Caregiver Perspective</b> Guest Speaker
4:15	<b>Wrap up &amp; Closing Comments</b> Eric LeFebvre, MD, FACEP & Erica Futrell, MSL
4:20 pm	<b>Adjourn</b>

Register online at [www.wakeahec.org](http://www.wakeahec.org).

## Speakers

### Alliance Medical Ministry

Edwin Burkett, MD, MBA  
Medical Director

### Duke University

Stephanie Hart, PhD, APRN, NP-C  
Clinical Associate and Postdoctoral Scholar  
National Clinician Scholars Program  
Duke Clinical and Translational  
Science Institute  
Duke University School of Nursing

### Transitions LifeCare

Rachel Lipner, DO, HMDC  
Executive Medical Director  
Medical Director of Inpatient Palliative  
Medicine

### UNC Health

Melinda Manning, JD, MSW  
Director, UNC Health Beacon Program

### WakeMed Health & Hospitals

Kaytlin Atwood, MSN, APRN, AGCNS-BC,  
MEDSURG-BC  
Medical-Surgical Clinical Nurse Specialist

Micah Krempasky, MD  
CMO, Mental Health & Well-being

Linda Mayo, MSN, APRN, ACNS, AGNP  
Clinical Nurse Specialist  
Adult Acute Care Services

Derya Ozkok, MD  
Hospitalist, Geriatrician

Graham Snyder, MD, FACEP  
Medical Director  
Medical Simulation Center  
WakeMed Health & Hospitals  
Director of Education  
Wake Emergency Physicians, PA

## Planning Committee

### Wake Emergency Physicians, PA

Eric LeFebvre, MD, FACEP  
Conference Course Director  
Physician and Geriatric Emergency  
Medicine Liaison

### Wake AHEC

Erica Futrell, MSL  
Associate Director, CME  
  
Lue McKnight, MBA  
Project Coordinator, CME & Pharmacy

Barbara McNeill, MSN, RN, NPD-BC  
Associate Director, Nursing

### WakeMed Health & Hospitals

Kaytlin Atwood, MSN, APRN, AGCNS-BC,  
MEDSURG-BC  
Medical-Surgical Clinical Nurse Specialist

Kristi Blankenship, BSN, RN, CEN, TCRN  
Trauma Nurse Coordinator

Elaine Marinello, MSN, RN, NPD-BC  
Education Resource Specialist

Sarah McIntyre, MSN, CEN, TCRN  
Trauma Program Manager

Brigit Piercy, MHA, BSN, NE-BC, RN-BC  
Director, Cary Med/Surg Nursing

Rev. Sara Robb-Scott, MDiv  
Bereavement Program Coordinator



Register online at [www.wakeahec.org](http://www.wakeahec.org).

## Credit

---

**CME Credit:** The Wake Area Health Education Center (Wake AHEC) designates this live activity for a maximum of 6.75 **AMA PRA Category 1 Credits™**. Physicians should claim only the credit commensurate with the extent of their participation in the activity.



The Wake Area Health Education Center is accredited by the North Carolina Medical Society (NCMS) to provide continuing medical education for physicians.

**6.75 Nursing Contact Hours:** Wake Area Health Education Center (AHEC) Nursing Education is approved as a provider of nursing continuing professional development by the North Carolina Nurses Association, an accredited approver by the American Nurses Credentialing Center's Commission on Accreditation.

**Physical Therapists:** Wake AHEC is a pre-approved provider for NCBPTE Continuing Competence Activities. This activity is approved for 7.0 hours.

**Occupational Therapists:** As of July 1, 2018, the NCBOT no longer accepts applications for pre-approval of CCAs. OT practitioners need to make sure they are completing activities that comply with Section .0800 of the NCBOT Rules. 6.75 CCAs. Please select contact hours for your certificate.

**Nursing Home Administrators (NCBENHA):** Wake Area Health Education Center will provide 6.75 Clock Hours. (Pending Approval)

**Case Management:** This program has been submitted to The Commission for Case Manager Certification for approval to provide board certified case managers with 6.75 clock hours.

**Category A NC Psychology Credit:** This program will provide 6.75 contact hours (Category A) of continuing education for North Carolina Psychologists. Partial credit will not be awarded.

**Certified Chaplains:** The provider of this educational event has designed the program so that it may be considered by participants for use as continuing

education to enhance the professional knowledge and pastoral competency of chaplains certified through the Board of Chaplaincy Certification Inc.® an affiliate of the Association of Professional Chaplains®

**Wake AHEC CEU:** Wake AHEC will provide 0.7 CEU to participants upon completion of this program activity.

A participant must attend 100% of the activity to receive credit. Partial credit will not be awarded.

**Contact Hours:** Wake AHEC will provide up to 6.75 contact hours to participants upon completion of this program activity.

## Registration Fee

---

- **Early Fee** - \$79; after August 23rd, 2023 - \$99.
- Vouchers will be accepted.
- Registration will include online handouts and online certificate of completion.
- Breakfast/breaks/lunch will be provided.
- To assure quality programming and safety for all participants, babies and children may not attend this program.
- Call 919-350-8547 for our Inclement Weather Updates.

## Cancellations and Refunds

Registrants cancelling between August 23, 2023 and September 5th, 2023 will incur a \$25 cancellation fee. No refunds or credits will be given for cancellations received after September 5, 2023.

## Photo Policy

---

Attendance at this activity grants permission for Wake AHEC to use any photographs, audio, video, or other images from this activity for promotional or educational purposes. Please notify an AHEC staff member if you have concerns.

## ADA Statement

---

Visit [www.wakeahec.org](http://www.wakeahec.org) for Wake AHEC's ADA statement.

**Questions?** Contact Lue McKnight at 919-350-0469 or [lmcknight@wakeahec.org](mailto:lmcknight@wakeahec.org).

**Register online at [www.wakeahec.org](http://www.wakeahec.org).**